

# TECHNICAL DATASHEET



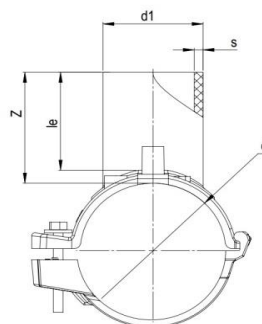
## EF SPIGOT SADDLE

04 Update - 02/2023

### TECHNICAL DATA

|                       |                   |
|-----------------------|-------------------|
| Article No            | 001 117 2091 0327 |
| d<br>(mm)             | 280-315           |
| d1<br>(mm)            | 63                |
| Z<br>(mm)             | 75                |
| L<br>(mm)             | 160               |
| le<br>(mm)            | 67                |
| S<br>(mm)             | 5,8               |
| Weight<br>(Kg)        | 0,940             |
| Box Quantity<br>(pcs) | 8                 |
| Box Dimension<br>(cm) | 55x30x36          |

### INJECTION MOULDED



### IDENTIFICATION OF PRODUCT

|                |  |
|----------------|--|
| D(mm)          | 280-315x63   |
| SDR            | 11   |
| RAW MATERIAL   | PE 100   |
| PRESSURE CLASS | 16 Bar Water 10 Bar Gas  |
| TRADEMARK      | NTG  |
| EXECUTION      | Injection Moulded  |
| STANDARD       | EN 12201-3<br>EN 1555-3<br>AS / NZS 4129                           |
| SPECIFICATION  | Suitable for SDR9....17 pipe<br>Long Spigot<br>4 mm pin connectors |

### EF SPECIFICATION

|                 |              |
|-----------------|--------------|
| WELDING VOLTAGE | 40 V         |
| RESISTANCE      | 7.0 $\Omega$ |
| WELDING TIME    | 130 Sec.     |
| COOLING TIME    | 15 Min.      |
| WINDING TYPE    | Monofilar    |
| WELDING BARCODE |              |



142007323153407005130113

Tolerance on diameters and thickness according to the standards. The other dimensions are specialized. Tolerance  $\pm 5\%$ . NTG PLASTIK reserves all the right to change any information without giving prior notice. The production, distribution and utilization of this document without explicit authorization is prohibited.